

LANGSTON SATURN

REPLACEMENT KNIVES AND PARTS



2021

PRECISION PARTS. PRECISION MANUFACTURING.



**CORRUGATED
REPLACEMENTS, INC.**
www.corrugatedparts.com

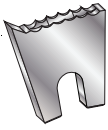
ISO 9001:2008 Certified Management System

161 Lee Industrial Drive
Blairsville, GA 30512

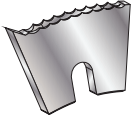
800.969.0881
Fax: 706.781.6649

www.corrugatedparts.com
sales@corrugatedparts.com

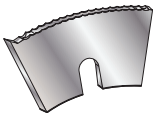
37½” STANDARD MALE SLOTTER KNIVES - 3/8” SLOTTING



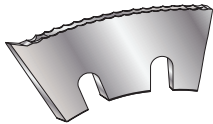
2 INCH				
PART #	M-3542-S	M-3542	M-3538-S	M-3538
DESCRIPTION	SERRATED MALE WITH TIP	MALE WITH TIP	SERRATED MALE WITHOUT TIP	MALE WITHOUT TIP



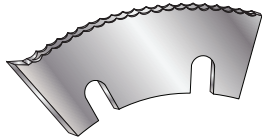
3 INCH				
PART #	M-3510-S	M-3510	M-3434-S	M-3534
DESCRIPTION	SERRATED MALE WITH TIP	MALE WITH TIP	SERRATED MALE WITHOUT TIP	MALE WITHOUT TIP



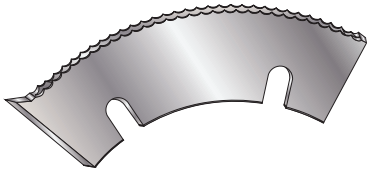
4 INCH				
PART #	M-3544-S	M-3544	M-3501-S	M-3501
DESCRIPTION	SERRATED MALE WITH TIP	MALE WITH TIP	SERRATED MALE WITHOUT TIP	MALE WITHOUT TIP



5 INCH				
PART #	M-3515-S	M-3515	M-3511-S	M-3511
DESCRIPTION	SERRATED MALE WITH TIP	MALE WITH TIP	SERRATED MALE WITHOUT TIP	MALE WITHOUT TIP



6 INCH				
PART #	M-3546-S	M-3546	M-3536-S	M-3536
DESCRIPTION	SERRATED MALE WITH TIP	MALE WITH TIP	SERRATED MALE WITHOUT TIP	MALE WITHOUT TIP



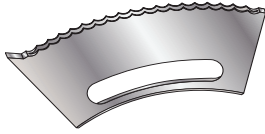
8 INCH				
PART #	M-3514-S	M-3514	M-3513-S	M-3513
DESCRIPTION	SERRATED MALE WITH TIP	MALE WITH TIP	SERRATED MALE WITHOUT TIP	MALE WITHOUT TIP



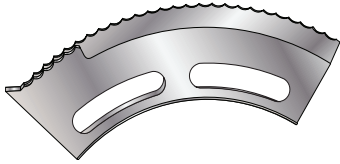
10 INCH				
PART #	M-35522-S	M-35522	M-3550-S	M-3550
DESCRIPTION	SERRATED MALE WITH TIP	MALE WITH TIP	SERRATED MALE WITHOUT TIP	MALE WITHOUT TIP



37½” GLUEHEAD MALE SLOT KNIVES- 3/8” SLOTTING



6 INCH				
PART #	M-35005-S	M-35005	M-351001-S	M-351001
DESCRIPTION	SERRATED MALE WITH TIP, HORIZONTAL SLOT	MALE WITH TIP, HORIZONTAL SLOT	SERRATED MALE WITHOUT TIP, HORIZONTAL SLOT	MALE WITHOUT TIP, HORIZONTAL SLOT

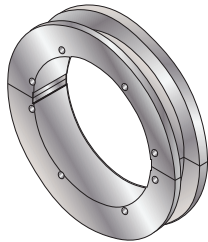


8 INCH				
PART #	M-35512-S	M-35112	M-35511-S	M-35511
DESCRIPTION	SERRATED MALE WITH TIP, HORIZONTAL SLOT	MALE WITH TIP, BEVEL, HORIZONTAL SLOT	SERRATED MALE WITHOUT TIP, BEVEL, HORIZONTAL SLOT	MALE WITHOUT TIP, BEVEL HORIZONTAL SLOT

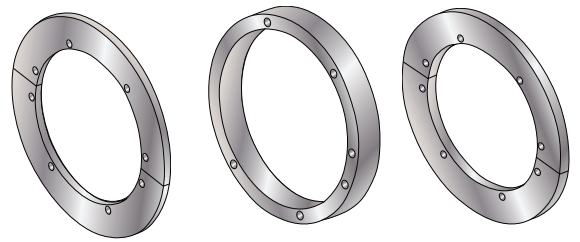


12 INCH		
PART #	M-35571-S	M-35571
DESCRIPTION	SERRATED TIP	TIPPED MALE

☀ UPPER WEAR PLATE ASSEMBLY

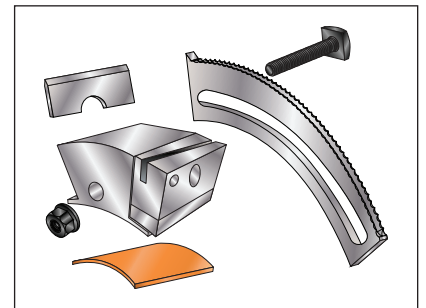
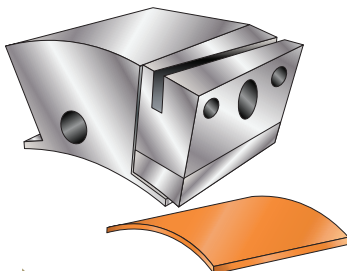


ONE PIECE WEAR PLATE ASSEMBLY	
PART #	CR-30329
OEM #	256190
DESCRIPTION	ONE PIECE WEAR PLATE ASSEMBLY. EASY FAST INSTALLATION.



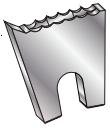
WEAR PLATES - INDIVIDUAL			
PART #	F-1043	F-1056	F-1044

☀ COMPLETE STITCH BLOCK ASSEMBLY

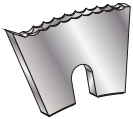


COMPLETE STITCH BLOCK ASSEMBLY		
PART #	CR-30083-C	CR-30072-R
DESCRIPTION	COMPLETE STITCH BLOCK ASSEMBLY (KNIFE CR-30072, KNIFE HOLDER(L&R), BASE WEDGE, SHOCK PAD)	BASE WEDGE

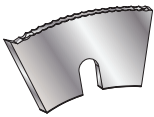
50" STANDARD MALE SLOTTER KNIVES - 3/8" SLOTTING



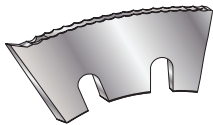
2 INCH				
PART #	M-2371-S	M-2371	M-833-S	M-833
DESCRIPTION	SERRATED MALE WITH TIP	MALE WITH TIP	SERRATED MALE WITHOUT TIP	MALE WITHOUT TIP



3 INCH				
PART #	M-831-S	M-831	M-939-S	M-939
DESCRIPTION	SERRATED MALE WITH TIP	MALE WITH TIP	SERRATED MALE WITHOUT TIP	MALE WITHOUT TIP



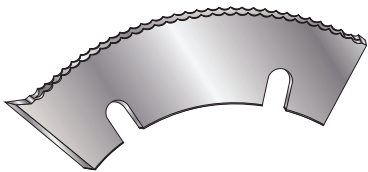
4 INCH				
PART #	M-23528-S	M-23528	M-2345-S	M-2345
DESCRIPTION	SERRATED MALE WITH TIP	MALE WITH TIP	SERRATED MALE WITHOUT TIP	MALE WITHOUT TIP



5 INCH				
PART #	M-2378-S	M-2378	M-834-S	M-834
DESCRIPTION	SERRATED MALE WITH TIP	MALE WITH TIP	SERRATED MALE WITHOUT TIP	MALE WITHOUT TIP



6 INCH				
PART #	M-2377-S	M-2377	M-835-S	M-835
DESCRIPTION	SERRATED MALE WITH TIP	MALE WITH TIP	SERRATED MALE WITHOUT TIP	MALE WITHOUT TIP



8 INCH				
PART #	M-2398-S	M-2398	M-2348-S	M-2348
DESCRIPTION	SERRATED MALE WITH TIP	MALE WITH TIP	SERRATED MALE WITHOUT TIP	MALE WITHOUT TIP



10 INCH				
PART #	M-2362-S	M-2362	M-2350-S	M-2350
DESCRIPTION	SERRATED MALE WITH TIP	MALE WITH TIP	SERRATED MALE WITHOUT TIP	MALE WITHOUT TIP



12 INCH				
PART #	M-23582-S	M-23582	M-23591-S	M-23591
DESCRIPTION	SERRATED MALE WITH TIP	MALE WITH TIP	SERRATED MALE WITHOUT TIP	MALE WITHOUT TIP



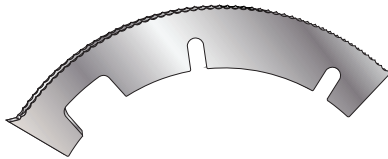
50" GLUEHEAD MALE SLOTTER KNIVES- 3/8" SLOTTING



6 INCH				
PART #	M-173161-S	M-173161	M-171379-S	M-171379
DESCRIPTION	SERRATED MALE WITH TIP	MALE WITH TIP	SERRATED MALE WITHOUT TIP	MALE WITHOUT TIP

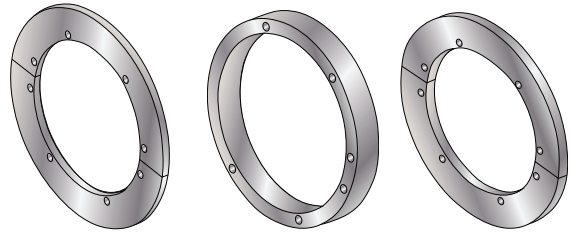
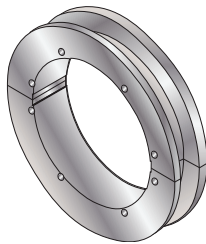


10 INCH				
PART #	M-23536-S	M-23536	M-23537-S	M-23537
DESCRIPTION	SERRATED MALE WITH TIP, SCALLOP BEVEL	MALE WITH TIP, SCALLOP BEVEL	SERRATED MALE WITHOUT TIP, SCALLOP BEVEL	MALE WITHOUT TIP, SCALLOP BEVEL



13 INCH				
PART #	M-171807-S	M-171807	M-171559	M-171559-S
DESCRIPTION	MALE WITH TIP SERRATED	MALE WITH TIP	MALE WITHOUT TIP	MALE WITHOUT TIP SERRATED

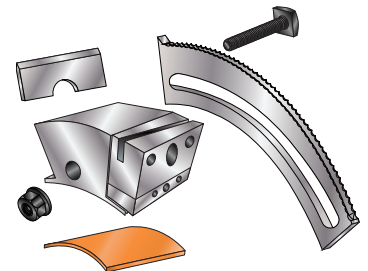
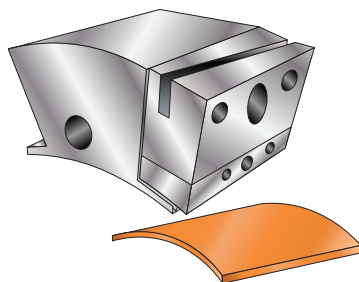
☀ UPPER WEAR PLATE ASSEMBLY



UPPER WEAR PLATE ASSEMBLY	
PART #	CR-30398
OEM #	256760
DESCRIPTION	ONE PIECE WEAR PLATE ASSEMBLY. EASY FAST INSTALLATION.

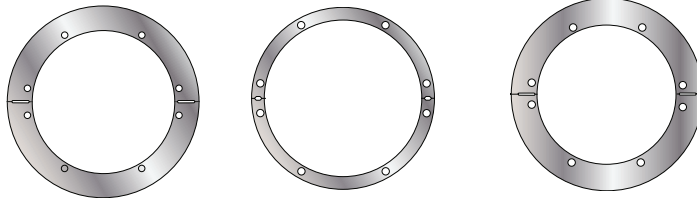
WEAR RINGS - INDIVIDUAL			
PART #	CR-30648-1	CR-30648-2	CR-30648-3
OEM#	256760-1	256760-2	256760-3

☀ COMPLETE STITCH BLOCK ASSEMBLY



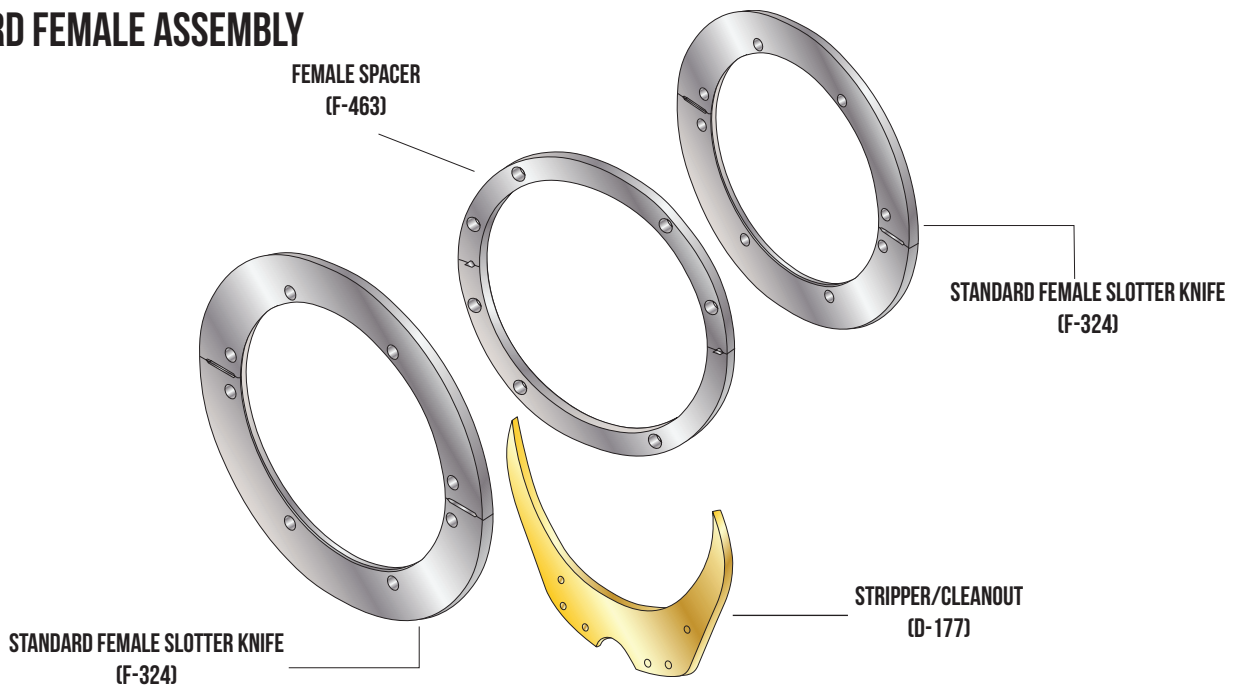
COMPLETE STITCH BLOCK ASSEMBLY		
PART #	CR-30084-C	CR-30072-R
DESCRIPTION	COMPLETE STITCH BLOCK ASSEMBLY (KNIFE CR-30072, KNIFE HOLDER(L&R), BASE WEDGE, SHOCK PAD)	BASE WEDGE

FEMALE SLOTTER KNIVES FOR SOFT-CUT ANVIL SYSTEM ONLY

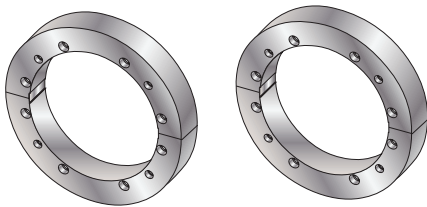


PART #	F-324	F-463	F-926
OEM#	254479B		415641
DESCRIPTION	STANDARD	SPACER	THIN PINCH RING

STANDARD FEMALE ASSEMBLY

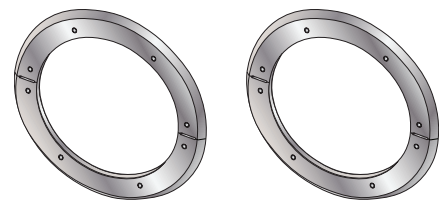


ANVIL RINGS



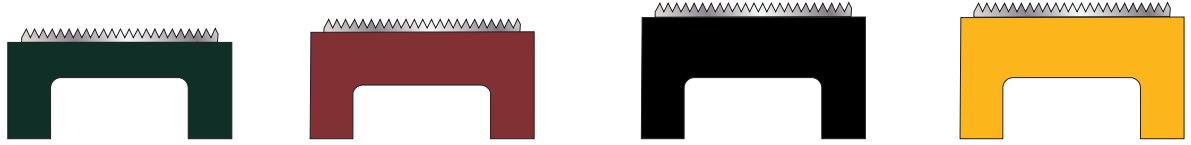
FEMALE ANVIL RINGS		
PART #	A-106	A-85
OEM #		256189
DESCRIPTION	2" TAB ANVIL	1 5/8" TAB ANVIL

TRIM KNIVES



TRIM KNIVES		
PART #	G-1018	G-884
OEM #		25618C
DESCRIPTION	THREADED UPPER TRIM KNIFE	THREADED LOWER TRIM KNIFE

STITCH TAB KNIVES FOR SOFT CUT ANVIL SYSTEM



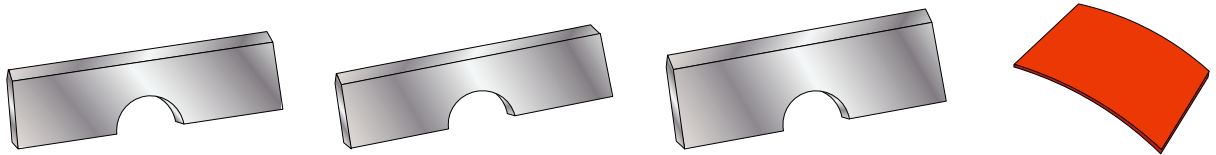
1-5/8" FOR URETHANE ANVIL

PART #	P-1886-CB	P-1887-CB	PB-1888-CB	PB-1889-CB
DESCRIPTION	B FLUTE TAB KNIFE (GREEN)	C FLUTE TAB KNIFE (RED)	BC FLUTE TAB KNIFE (BLACK)	AC FLUTE TAB KNIFE (YELLOW)

2" FOR URETHANE ANVIL

PART #	P-531-CB	P-532-CB	PB-533-B	PB-534-CB
DESCRIPTION	B FLUTE TAB KNIFE (GREEN)	C FLUTE TAB KNIFE (RED)	BC FLUTE TAB KNIFE (BLACK)	AC FLUTE TAB KNIFE (YELLOW)

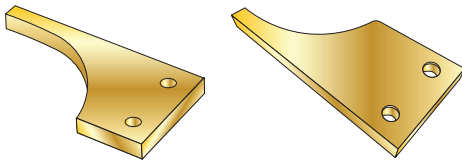
STITCH TAB KNIVES FOR HARD CUT ANVIL SYSTEM



2" FOR HARD ANVIL

PART #	SSLK-.620-X2-HM	SSLK-.575X2-HM	SSLK-.7102X3XH	CR-30547-2
OEM #	412668-2	412668-1	412668-5	
DESCRIPTION	C FLUTE STEEL-TO-STEEL TAB KNIFE	B FLUTE STEEL-TO-STEEL TAB KNIFE	DOUBLE WALL STEEL-TO-STEEL TAB KNIFE	SHOCK PAD

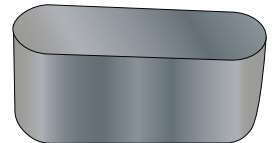
PULLEY YOKES



LOWER PULLEY YOKES

PART #	B-129-B12	D-179-B12
OEM #	250994	413275

CARBIDE WEAR INSERTS FOR YOKE HEADS

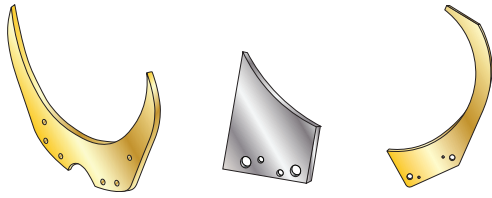


WEAR INSERTS

PART #	CR-30110
OEM #	256246

LANGSTON SATURN REPLACEMENT PARTS

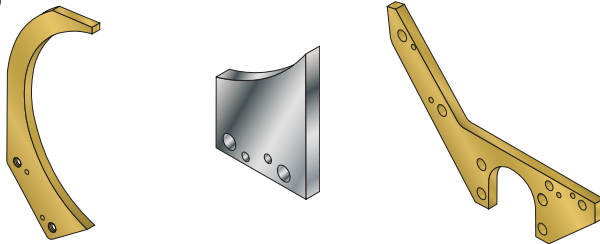
☀️ 37½" STRIPPERS/CLEANOUT



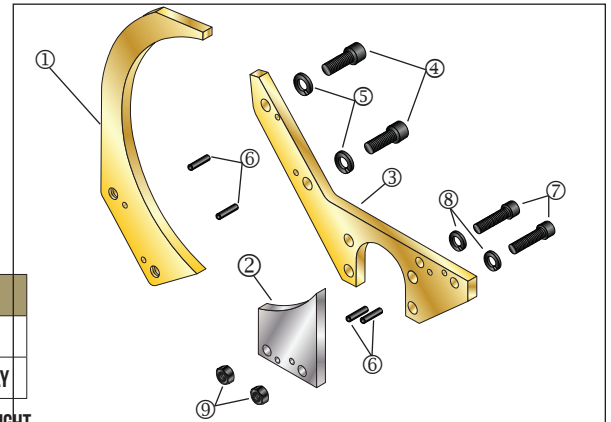
PART #	D-177	D-178-C	D-178-B	D-178-AS
OEM #	408768	411054	411049	
DESCRIPTION	STRIPPER	STRIPPER	STRIPPER	*STRIPPER ASSEMBLY

* SEE ILLUSTRATION TO THE RIGHT

☀️ STRIPPERS



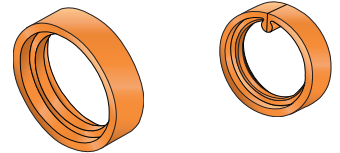
PART #	D-178B-S38 (STEEL) D-178B-B38 (BRASS)	D-178C-S38 (STEEL) D-178C-B38 (BRASS)	D-178D-S38 (STEEL) D-178D-B38 (BRASS)
OEM #	411054 / 411055	41076 / 411054	411049
DESCRIPTION	STRIPPER	STRIPPER	HOLDER



STRIPPER ASSEMBLY

ITEM	PART #	DESCRIPTION	QTY.
1	D-178-B	STRIPPER	1
2	D-178-C	STRIPPER	1
3	D-178-D	HOLDER	1
4		3/8-16" X 1 SHCS	2
5		3/8" LOCK WASHER	2
6		Ø3/16" X 3/4" SPRING PIN	4
7		5/16-18" X 1-1/4" SHCS	2
8		5/16" LOCK WASHER	2
9		5/16" HEX NUT	2

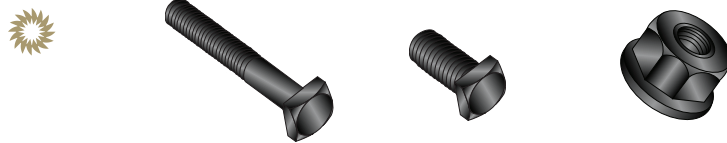
☀️ FEED WHEELS



FEED WHEELS

PART #	CR-32001-G	CR-32001-S
DESCRIPTION	FEED WHEEL	SPLIT FEED WHEEL

NUTS & BOLTS



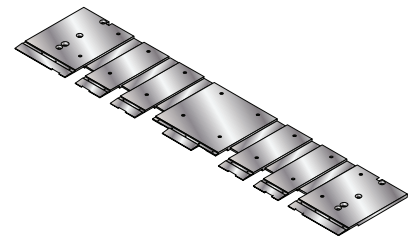
1/2 INCH

PART #	CR-128	CR-108	CR-210
DESCRIPTION	1/2" X 3-1/2" BOLT SQUARE HEAD	1/2" X 1-1/2" BOLT SQUARE HEAD	1/2" FLANGE NUT (EXTRA HEAVY)

3/8 INCH

PART #	CR-215	CR-208	CR-315
DESCRIPTION	3/8" X 2 1/2" BOLT SQUARE HEAD	3/8" X 1-1/8" BOLT SQUARE HEAD	3/8" FLANGE NUT (EXTRA HEAVY)

☀️ KICKER PLATES



KICKER PLATES

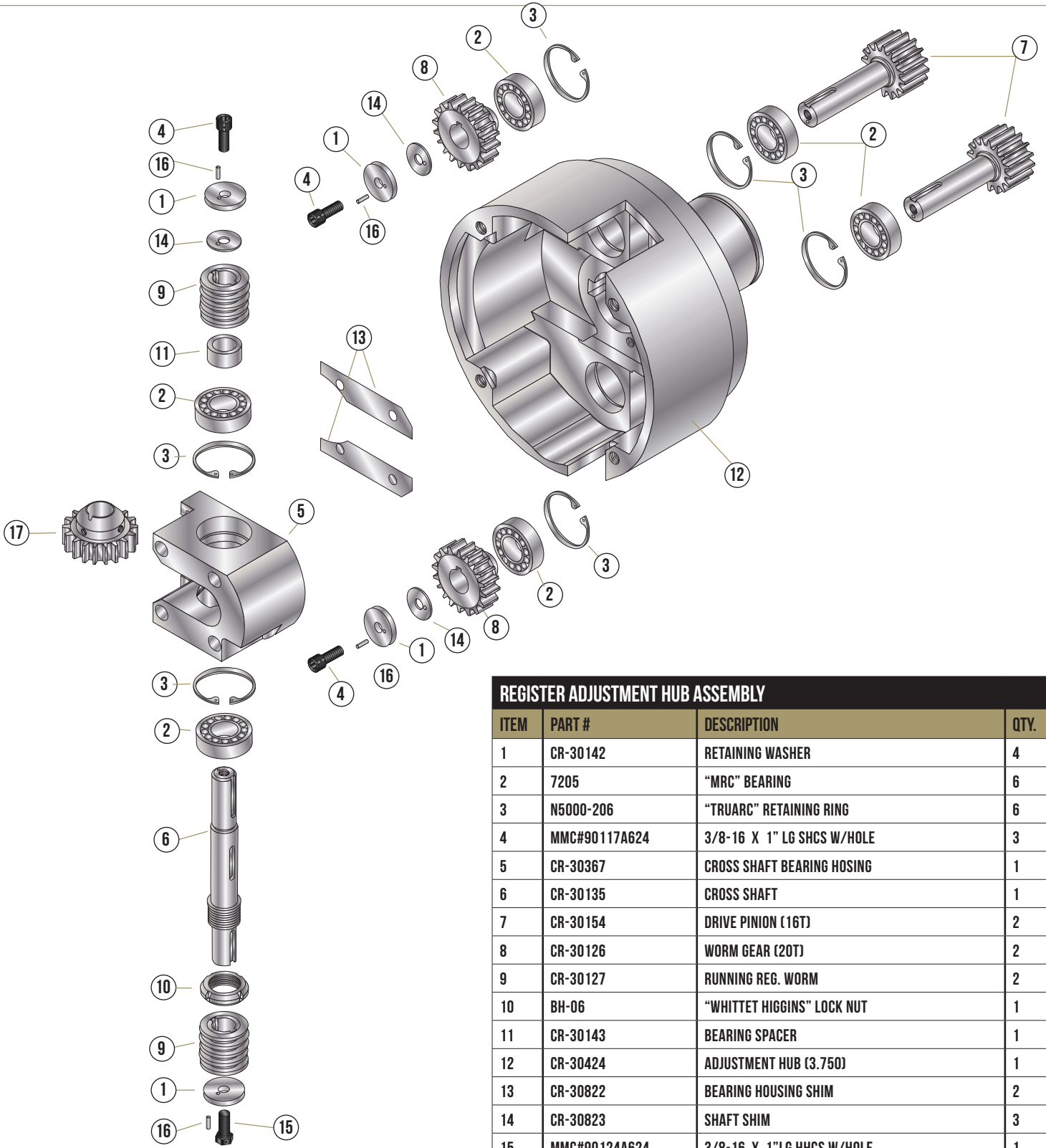
PART #	CR-940-KP
DESCRIPTION	KICKER PLATE

LANGSTON SATURN UPPER & LOWER SHAFT ASSEMBLY



MALE STITCH HEAD	
PART #	CR-4020-H
*ALL MALE & FEMALE SLOT HEADS AVAILABLE FOR: SATURN II AND SATURN III CALL - 800-969-0881	

LANGSTON SATURN II REGISTER ADJUSTMENT HUB ASSEMBLY



REGISTER ADJUSTMENT HUB ASSEMBLY			
ITEM	PART #	DESCRIPTION	QTY.
1	CR-30142	RETAINING WASHER	4
2	7205	"MRC" BEARING	6
3	N5000-206	"TRUARC" RETAINING RING	6
4	MMC#90117A624	3/8-16 X 1" LG SHCS W/HOLE	3
5	CR-30367	CROSS SHAFT BEARING HOUSING	1
6	CR-30135	CROSS SHAFT	1
7	CR-30154	DRIVE PINION (16T)	2
8	CR-30126	WORM GEAR (20T)	2
9	CR-30127	RUNNING REG. WORM	2
10	BH-06	"WHITTET HIGGINS" LOCK NUT	1
11	CR-30143	BEARING SPACER	1
12	CR-30424	ADJUSTMENT HUB (3.750)	1
13	CR-30822	BEARING HOUSING SHIM	2
14	CR-30823	SHAFT SHIM	3
15	MMC#90124A624	3/8-16 X 1" LG HHCS W/HOLE	1
16	MMC#98381A471	1/8 DIA X 1/2" LG STL. DOWEL PIN	4
17	CR-30149	WORM GEAR (20T)	1



EXPERTISE YOU CAN COUNT ON



KIM GARRETT

kim.garrett@corrugatedparts.com

LINZIE ONEY

linzie@corrugatedparts.com

JOHN SUTTON

john.sutton@corrugatedparts.com

BRIAN POWELL

brian.powell@corrugatedparts.com

JESSE JORGENSEN

jesse.jorgensen@corrugatedparts.com



**CORRUGATED
REPLACEMENTS, INC.**

PRECISION PARTS. PRECISION MANUFACTURING.

24/7

EMERGENCY SERVICE

(800)969-0881

**161 Lee Industrial Dr.
Blairsville, GA 30512**

SALES@CORRUGATEDPARTS.COM



CORRUGATED VENDING SOLUTIONS



BENEFITS:

- **Increase Productivity.** 24/7 access and availability of your inventory and other components, products are immediately available for employees, so they can get what they need and get back to work, doing away with downtime.
- **Manage Inventory.** Our solution puts the items your company needs at your fingertips. As a result, rather than relying on the traditional min/max-based procurement or ordering on a demand-basis. Your company's stock is ordered only when it is consumed or on other pre-agreed terms.
- **Streamline Ordering Process.** With Corrugated Replacements vending solution, you can avoid traditional purchase orders and will receive a consolidated invoice for each restocking visit, almost eliminating overhead costs and administrative paperwork!
- **Save Time.** Let's hear it for no more monitoring stock levels, dealing with inventory control, or accounts and receiving activities.



CORRUGATED
REPLACEMENTS, INC.



Tired of running out of the parts you need? Give us a call today!

(800)969-0881 | corrugatedparts.com